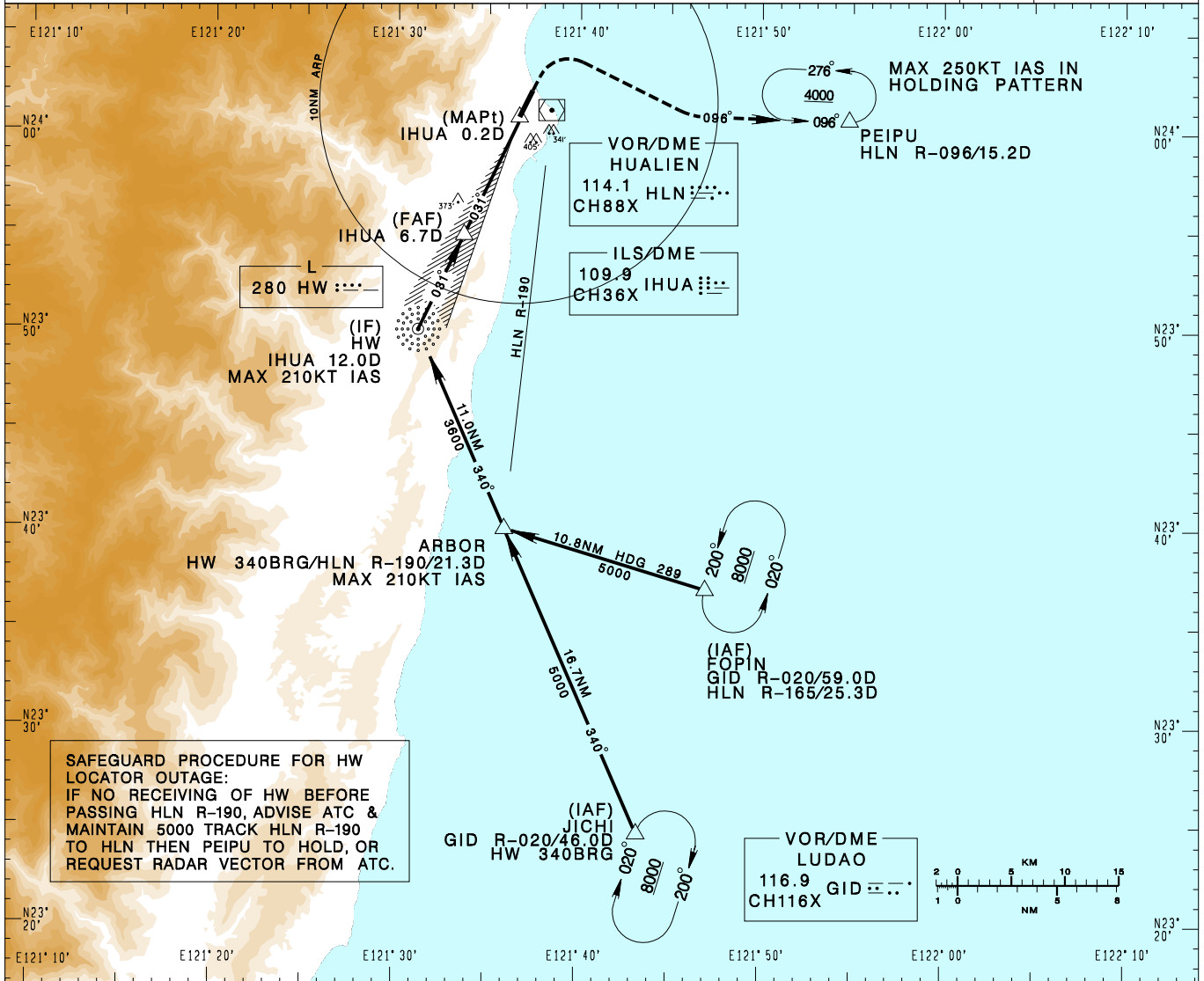


花蓮機場
HUALIEN AD

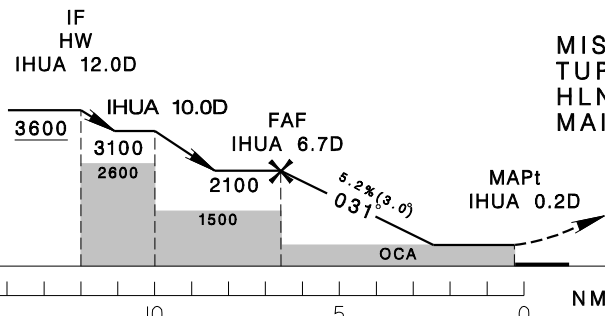
RCYU
LOC RWY03

TAIPEI APP 124.0 119.1 330.2 276.8				HUALIEN TWR 118.1 126.18 236.6				VAR 4° W
Apt Elev: 51'		Rwy03 THR Elev: 44'		Trans Level: FL130		Trans Alt: 11,000'		
BEARINGS ARE MAGNETIC; DISTANCES ARE NAUTICAL MILES; ELEVATIONS, HEIGHTS IN FEET								



SAFEGUARD PROCEDURE FOR HW LOCATOR OUTAGE:
 IF NO RECEIVING OF HW BEFORE PASSING HLN R-190, ADVISE ATC & MAINTAIN 5000 TRACK HLN R-190 TO HLN THEN PEIPU TO HOLD, OR REQUEST RADAR VECTOR FROM ATC.

6DME	5DME	4DME	3DME	2DME	DIST to IHUA
1960	1640	1320	1000	690	ADVISORY ALT



MISSED APCH:
 TURN RIGHT TO TRACK HLN R-096 TO PEIPU, MAINTAIN 4000 AND HOLD.

CATEGORY	MINIMA (OCA IN FT, VIS IN M, OCH IN FT)			
	A	B	C	D
STRAIGHT IN	630/1200 586 RVR1200	630/1200 586 RVR1200	630/2500 586	630/2500 586
STRAIGHT IN (ALS OUT)	630/1600 586	630/1600 586	630/2700 586	630/2700 586

NOTE
 1. CIRCLING NOT AUTHORIZED.
 2. CAUTION HIGH TERRAIN AROUND THE AIRPORT AND ALONG THE APPROACH COURSE.
 3. A 341FT MSL STACK AT 1.52NM EAST OF THR03.
 4. A 405FT MSL TREE AT 1.18NM SE OF THR03.
 5. NO TURN BEFORE MAPt.
 *DME REQUIRED.

CHANGES: NEW PAGE NUMBER